

5

DAYS

CHIANG MAI / CHIANG RAI *(Overnight)*

THAILAND

PRIVATE TOUR

Validity: **APRIL – OCTOBER, 2024**
FROM RM 3130 pp

- Price Per Person in RM
- Daily Departure
- Minimum 02 Adults
- Land Tour Package Only

PRICE INCLUSIONS

- ✓ Return private transfer airport-hotel-airport
- ✓ 4 nights accommodation
- ✓ 4 breakfasts, 3 lunches and 4 dinners at local restaurant
- ✓ Tours as specified in the itinerary with English speaking local guide
- ✓ Gratuities to guide and driver

PRICE EXCLUSIONS

- ✗ Airfare & applicable airport taxes
- ✗ Personal Incidental Expenses

REMARKS

- ❖ Tour prices and itinerary quoted are subject to change
- ❖ Peak season surcharge may apply (To be advised upon booking)
- ❖ Subject to room availability
- ❖ No refund for un-utilized tours or services
- ❖ Terms & Conditions Apply

VISA

Tourist visa not required for Malaysian passport for a stay up to 30days

TRAVEL INSURANCE



Travel Insurance provider:
AIG Malaysia Insurance Berhad

22Feb''24

HOTEL CATEGORY	Minimum 2-3 Adults	Minimum 4-5 Adults	Single Supplement
	Twin/Triple Share		
4★ - DuangTawan	3130	2395	450
4★ - Novotel	3265	2525	590
4★ - Movenpick	3325	2580	660

CHIANG RAI - 4★ - M Boutique Resort
Black-out date: 16-12 April, 2024

DAY	ITINERARY
01	CHIANGMAI – ARRIVAL (Dinner) Arrived at Chiangmai International Airport, transfer to proceed Chiangmai Orientation Tour . Visit City Walls, 3 Kings Monument and Chedi Luang Temple . Continue visit Doi Suthep included automatic tram, the famous Wat Prathad Doi Suthep (AD1384), with over 300 steps and 3,500 feet above sea level. Then, visit the newest Chiang Mai Landmark at Mae Kha Chanal Japanese Community . Transfer to hotel to check-in.
02	CHIANGMAI (Breakfast/Lunch/Dinner) Visit Mae Thang Elephant Camp , enjoy the Elephant Show and 30 minutes elephant ride. Continue to visit Long Neck Village . In afternoon, enjoy coffee and cake in Thai costume at Valley Café . Visit Royal Flora Garden included tram car around the garden. Dinner at Michelin Guide restaurant .
03	CHIANGMAI – CHIANGRAI (Breakfast/Lunch/Dinner) Early morning transfer to Chiang Rai. Visit Wat Rong Khun , the white temple. Continue to Golden Triangle , enjoy boat ride along Mea Khong River where the Three Country border line meet Thai – Laos – Burma. Next, visit the sky bridge , walk 9.9 metres along a glass bridge to a pair of octagonal glass platforms 25 metres above the ground. Visit Opium House , then transfer hotel for check-in.
04	CHIANGRAI – CHIANGMAI (Breakfast/ Lunch/Dinner) Transfer back to Chian Mai. En-route visit Wat Rong Sue Ten (Blue Temple) and Huay Pla Kang (Fortune Pagoda). Transfer back to Chiang Mai, en-route visit Mae Kajan Hot Spring and Bor Sang Handicraft for souvenir. Proceed to local restaurant, enjoy the Khantoke Dinner and Show . After dinner, visit night market.
05	CHIANGMAI – DEPARTURE (Breakfast) Depart Chiang Mai, transfer to airport.

HOTEL INFORMATION

CHIANG MAI



4★ - DUANGTAWAN HOTEL

<https://www.duangtawanhotelchiangmai.com/>

512 rooms – Located 10-minute walk from the Night Bazaar. The hotel is 15-minute drive from Chiang Mai International Airport and 8.5 km from Wat Prathat Doi Suthep.



4★ NOVOTEL CHIANGMAI NIMMAN JOURNEYHUB

<https://all.accor.com/hotel/B4F8/index.en.shtml>

81 rooms – Located within 1.3 km of Nimman Haemin and 2.4 km of Kad Suan Kaew Shopping Centre. The nearest airport is Chiang Mai International Airport, 6 km away.

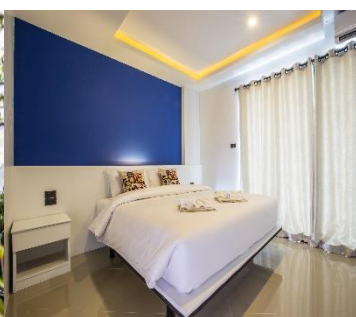


4★ MÖVENPICK SURIWONGSE HOTEL CHIANG MAI

<https://movenpick.accor.com/en/asia/thailand/chiang-mai/movenpick-suriwongse-hotel-chiang-mai.html>

263 rooms – Located about a 15-minute walk from the historic temples of Old Chiang Mai city. To reach Chiang Mai International Airport, you need a 15-minute drive.

CHIANG RAI



4★ - M BOUTIQUE RESORT

<https://www.mboutiqueresort.com/>

99 rooms – Located in the heart of Chiang Rai City. Close to some of Chiang Rai's most popular landmarks, such as Wat Phrathat Doi Tong and Wat Phra That Chom Thong.

All the pictures shown in this flyer is for illustration purpose only

TERMS & CONDITIONS

Passengers are deemed to have read, understood and accepted the following:-

Package Price

Quoted in Ringgit Malaysia (RM) and subject to exchange rate fluctuations. Validity of prices is seasonal and subject to change without prior notice. Child rates are applicable when child is occupying a room with at least two adults.

Deposit & Payment

A deposit of RM200 per person is required when booking is made. Receipt for deposit is valid for three (3) months from the date of issue. The deposit forms part of your final payment. Balance (final payment) must be made 15 days prior to departure. Failure to comply with this may result in an automatic cancellation of your reservations and forfeiture of your deposit.

Accommodation

Bedding varies from hotel to hotel, but the following usually applies:-

Single Occupancy: comprises 1 Queen/1 Twin Bed

Twin Occupancy: comprises 2 Single Beds

Rollaway Bed

Double Occupancy: comprises 1 Queen/King Bed

Triple Occupancy: comprises 3 Single / 1 Double +

If a rollaway bed is required, an extra charge applies. Most hotels will not put more than one rollaway in a room. Baby cots can be requested in advance and if extra charge applies, passenger must pay directly to hotel.

Hotel Check-In/Out Times : Standard check-in time is after 1500hrs and check-out is before 1100hrs

Amendment Charges

An administrative fee of RM100 will be charged for each subsequent amendment made after the confirmation. Any other cost arising from the amendment will be borne by the passenger. No amendment can be made within 15 days prior to departure. A change on the entire booking is considered a cancellation and is subject to cancellation charges.

Cancellation Charges

You may cancel your booking at any time. Cancellation must be made in writing to avoid any misunderstanding. If your cancellation is received by the Company more than 30 days prior to your departure, an administration fee of RM100 per person will be levied. If your notice of cancellation is received fewer than 30 days prior to departure, the following cancellation charges will apply:

Cancellation Received Cancellation Fee

Between 29 to 16 days prior to departure: Forfeiture of the Deposit

Between 15 to 08 days prior to departure: 50% of tour price

Between 7 days to departure day (No-Show): 100% of tour price

Refund

No refund will be made for unused tickets or any other unutilized portion of the inclusions. Request for refund as a result of changes to the package must be made in writing and an administrative fee of RM100 per person applies in addition to the supplier's cancellation fee. Refunds are payable only through the original booking agent.

General Information

The company reserves the right to substitute or alter similarly-priced accommodation, services and itineraries when necessary and there shall be no refund in such situation.

Responsibility

The company acts only as an agent and does not manage, control or operate any suppliers of services. The Company assumes no liability for any loss, injury, damage, accident, delay or irregularity which may be caused by these events – Acts of God, natural disasters, civil & military disorders, industrial disputes and any cause beyond the reasonable control of any company or person engaged in carrying out the arrangements made.

Reservations

All reservations are subject to space availability and confirmation.

Customer's Responsibilities

- Travel Insurance – to cover medical expenses arising through illness or accident prior to or during the holiday, and loss of the holiday and loss of holiday monies, cancellation or curtailment of holiday for insurable reasons.
- Passport & Visas – to be in possession of a valid passport and whatever necessary immigration documentation may be required by the country(ies) for the duration of the holiday.

Visa Application

Tourist visa is not required for Malaysian passport for a stay up to 30days.