

5

DAYS

VIVID SYDNEY

AUSTRALIA

Seat-In-Coach Tour

Validity: May 22 – June 13, 2026

FROM AUD **1200** pp

- Price quoted in AUD
- Daily Departure
- Minimum 02 Adults
- Land Package Only

Price Inclusions

- ✓ Return airport – hotel by shuttle transfer, available from 0700hrs till 1900hrs.
- ✓ 4 nights stay at your selected hotel with breakfast
- ✓ Sightseeing tour as per itinerary with English speaking commentary
- ✓ Australia goods and services tax

Price Exclusions

- ✗ Airfare & applicable airport taxes
- ✗ Personal Incidental Expenses
- ✗ Gratuities to driver & guide (AUD10 per person per day – pay direct)
- ✗ Travel Insurance

Remarks

- ❖ Tour prices quoted are subject to change
- ❖ Subject to room availability
- ❖ No refund for un-utilized tour or services
- ❖ All payment in Ringgit Malaysia, subject to currency exchange rate
- ❖ Terms & Conditions Apply

Visa

Tourist visa is required. Apply via Australian ETA mobile app

Travel Insurance (recommended)

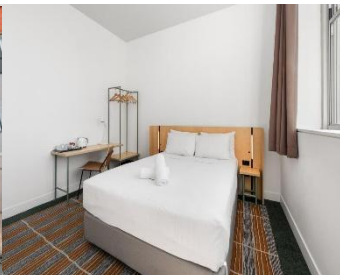
AIG Travel Insurance provider:
AIG Malaysia Insurance Berhad

12Mar26/LC/197301000040/ 13564 / KKKP 0421

Hotel	Adult			Child [2-11yrs]		Extension Night with Breakfast Per Room Night		
	Twin Share	Triple Share	Single Room	Extra Bed	No Bed	Single/Twin	Triple	Child No Bed
Hostel- YHA Sydney Harbour	1200	1195	1805	905	620	300	405	40
4★ - Novotel Sydney Darling Square	1295	1290	1995	1050	620	350	485	40
Peak Surcharge apply, date to be advised.								

DAY	TOUR SUMMARY
1	SYDNEY - ARRIVAL Arrive Sydney, seat-in-coach transfer to hotel. (No meet & greet service, shuttle transfer only available from 07.00am-07.00pm)
2	SYDNEY (Breakfast) Blue Mountain Sunset Without Crowds (BMS-S) (Operates Daily ; Departs: 10.00am) Take the Blue Mountains Tours to perceive a range of moods in the late afternoon light and capture sunsets on rugged ranges and valleys. This tour offers breathtaking views of the Blue Mountains National Park , including its famous rock formation , the Three Sisters . A guided 90 mins nature tour, walk down to base of Wentworth Falls. Finally, visit either Echo Point or Lincoln's Rock.
3	SYDNEY (Breakfast) Port Stephens, Dophin Cruise and 4WD & Sandboarding Tour <i>Pick-up points: Central Station Western Forecourt Coach Bay 9 & Furama Darling Harbour</i> Glide across the calm blue waters of Port Stephens aboard the dolphin-watching cruise . Hop on 4WD vehicle and try the exhilarating experience of sand-boarding on sand dunes
4	SYDNEY (Breakfast/ Dinner) Vivid Sunset Dinner Cruise <i>Operates Wed to Sun, Monday (08 Jun only)</i> Boarding 4.45pm at Darling Harbour King St. Wharf 1 (own arrangement to meeting point) 2 hours cruise , see the amazing lights of Vivid turn on at 6.00pm. A lifetime experience to witness the lights changing while cruising around the harbour. Enjoy a 3-courses dinner .
5	SYDNEY – DEPARTURE (Breakfast) Depart Melbourne, seat-in-coach transfer to airport.

HOTEL DESCRIPTION (for guideline only)



YHA SYDNEY HARBOUR - Hostel ★

<https://www.yha.com.au/hostels/nsw/sydney-surrounds/sydney-harbour/>

105 rooms – Located within 10 minutes' walk of Wynyard Station, less than 20 minutes' walk from the iconic Bridge Climb, Sydney Opera House and the Royal Botanic Gardens.



NOVOTEL SYDNEY DARLING SQUARE- 4★

<https://www.novoteldarlingharbour.com.au/>

525 rooms – Located a short walk to Darling Harbor's main attractions, including Wildlife Sydney Zoo, Sea Life Sydney Aquarium.

All the picture shows in this flyer are for illustration purpose only

TERMS & CONDITIONS

Passengers are deemed to have read, understood and accepted the following:-

Package Price

Quoted in Australian Dollar (AUD) and payment in Ringgit Malaysia (RM), subject to currency fluctuation. Validity of prices is seasonal and subject to change without prior notice. Child rates are applicable when child are occupying a room with at least two adult.

Deposit & Payment

A deposit of RM500 per person is required when booking is made. Receipt for deposit is valid for three (3) months from the date of issue. The deposit forms part of your final payment. Balance (final payment) must be made 15 days prior to departure. Failure to comply with this may result in an automatic cancellation of your reservations and forfeiture of your deposit.

Accommodation

Bedding varies from hotel to hotel, but the following usually applies:-

Single Occupancy: comprises 1 Queen/1 Twin Bed

Double Occupancy: comprises 1 Queen/King Bed

Twin Occupancy: comprises 2 Single Beds

Triple Occupancy: comprises 3 Single / 1 Double + Rollaway Bed

If a rollaway bed is required, an extra charge applies. Most hotels will not put more than one rollaway in a room. Baby cots can be requested in advance and if extra charge applies, passenger must pay directly to hotel.

Gratuities: AUD5 per person per day

Hotel Check-In/Out Times : Standard check-in time is after 1500hrs and check-out is before 1100hrs

Amendment Charges

An administrative fee of RM100 will be charged for each subsequent amendment made after the confirmation. Any other cost arising from the amendment will be borne by the passenger. No amendment can be made within 15 days prior to departure. A change on the entire booking is considered a cancellation and is subject to cancellation charges.

Cancellation Charges

You may cancel your booking at any time. Cancellation must be made in writing to avoid any misunderstanding. If your cancellation is received by the Company more than 30 days prior to your departure, an administration fee of RM100 per person will be levied. If your notice of cancellation is received fewer than 30 days prior to departure, the following cancellation charges will apply:

Cancellation Received Cancellation Fee

Between 29 to 16 days prior to departure: Forfeiture of the Deposit

Between 15 to 11 days prior to departure: 50% of tour price

Between 10 days to departure day (No-Show): 100% of tour price

Refund

No refund will be made for unused tickets or any other unutilized portion of the inclusions. Request for refund as a result of changes to the package must be made in writing and an administrative fee of RM100 per person applies in addition to the supplier's cancellation fee. Refunds are payable only through the original booking agent.

General Information

The company reserves the right to substitute or alter similarly-priced accommodation, services and itineraries when necessary and there shall be no refund in such situation.

Responsibility

The company acts only as an agent and does not manage, control or operate any suppliers of services. The Company assumes no liability for any loss, injury, damage, accident, delay or irregularity which may be caused by these events – Acts of God, natural disasters, civil & military disorders, industrial disputes and any cause beyond the reasonable control of any company or person engaged in carrying out the arrangements made.

Reservations

All reservations are subject to space availability and confirmation.

Customer's Responsibilities

- Travel Insurance – to cover medical expenses arising through illness or accident prior to or during the holiday, and loss of the holiday and loss of holiday monies, cancellation or curtailment of holiday for insurable reasons.
- Passport & Visas – to be in possession of a valid passport and whatever necessary immigration documentation may be required by the country(ies) for the duration of the holiday.

Visa Application

Tourist visa is required for Malaysian passport