

# 5 MELBOURNE DISCOVERY

DAYS

AUSTRALIA

Seat-In-Coach Tour

Validity: April 15 – December 20, 2026



Mount Martha Beach boxes – Mornington Peninsula

FROM AUD **1250** pp

- Price quoted in AUD
- Daily Departure
- Minimum 02 Adults
- Land Package Only

### Price Inclusions

- ✓ Return airport – hotel by shuttle transfer, available from 0700hrs till 1900hrs.
- ✓ 4 nights stay at your selected hotel with breakfast
- ✓ Sightseeing tour as per itinerary with English speaking commentary
- ✓ Australia goods and services tax

### Price Exclusions

- ✗ Airfare & applicable airport taxes
- ✗ Personal Incidental Expenses
- ✗ Gratuities to driver & guide (AUD10 per person per day – pay direct)
- ✗ Travel Insurance

### Remarks

- ❖ Tour prices quoted are subject to change
- ❖ Subject to room availability
- ❖ No refund for un-utilized tour or services
- ❖ All payment in Ringgit Malaysia, subject to currency exchange rate
- ❖ Terms & Conditions Apply

### Visa

Tourist visa is required. Apply via Australian ETA mobile app

### Travel Insurance (recommended)

**AIG** Travel Insurance provider: **AIG Malaysia Insurance Berhad**

### 3★ - The Victoria Hotel

Period	Adult			Child [2-11yrs]		Extension Night with Breakfast Per Room Night		
	Twin Share	Triple Share	Single Room	Extra Bed	No Bed	Single/Twin	Triple	Child No Bed
Apr15-Sep30	1250	1245	1840	795	650	340	410	40
Oct01-Dec20	1310	1300	1960	815	650	370	445	40

### 4★ - Ibis Melbourne Central

Period	Adult			Child [2-11yrs]		Extension Night with Breakfast Per Room Night		
	Twin Share	Triple Share	Single Room	Extra Bed	No Bed	Single/Twin	Triple	Child No Bed
Apr15-Sep30	1320	1315	1985	935	650	375	480	40
Oct01-Dec20	1390	1385	2125	935	650	410	510	40

Peak Surcharge apply, date to be advised.

### DAY TOUR SUMMARY

1	<b>MELBOURNE - ARRIVAL</b> Arrive Melbourne, seat-in-coach transfer to hotel. (No meet & greet service, shuttle transfer only available from 07.00am-07.00pm)
2	<b>MELBOURNE (Breakfast/Morning tea)</b> <b>Full Day Great Ocean Road – GORST</b> (Operates Daily, Departs: 6.40am Returns: 08.00pm) Spectacular coastal views along the <b>Great Ocean Road</b> . Visit Torquay Beach, enjoy a complimentary morning tea. A photostop at the famous Great Ocean Road sign. A guided tour of koalas and parrots in their natural habitat. Stop at picturesque <b>Apollo Bay</b> for lunch (own expense) - perhaps take a stroll along the picturesque beach front. Roam down to the <b>Loch Ard Gorge beach</b> and see the rock formations and scenery. A return stop at Colac for dinner (own expenses) <i>Note: Please bring a windbreaker and walking shoes.</i>
3 – 4	<b>MELBOURNE [ Choose either ONE of below Full Day Tour] (Breakfast)</b> 1. Sovereign Hill, Botanical Gardens & Melbourne Skydeck Bus Tour – Operates Tue & Fri - (SBMT) 2. Mornington Peninsula Scenic tour with lunch – Operates Fri (MPST) 3. Yarra Valley Winery Tour with lunch – Operates Thu & Fri (YVWT)
5	<b>MELBOURNE – DEPARTURE (Breakfast)</b> Depart Melbourne, seat-in-coach transfer to airport. (Shuttle transfer only available from 07.00am-07.00pm)

## TOUR DESCRIPTION (Subject to change)

### TOUR ITINERARY



#### SOVEREIGN HILL, BOTANICAL GARDENS & MELBOURNE SKYDECK BUS TOUR (SBMT)

*(Operates: Tue & Fri Departs: 7:30am Returns: 4:30pm approx.)*

Scenic drive west from Melbourne to Ballarat. Visit the stunning **Ballarat Botanical Gardens**. **Lake Wendouree**, take a relaxing wander around this beautiful lake. Continue travel to **Sovereign Hill**. Immerse yourself in the sights, sounds of 1850 Goldfields town at the open-air museum Sovereign Hill. Journey back to the **Eureka Tower**. The **Skydeck** is the highest viewing the Southern Hemisphere, a whole 300 meters high.

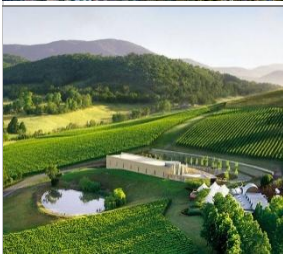
**Note: Traditional Custom at Sovereign Hill not included. Its need to book and pay on the spot.**



#### MORNINGTON PENINSULA SCENIC TOUR WITH LUNCH (MPST)

*(Operates: Fri Departs: 9.30am Returns: 5.30pm)*

Journey to Main Street Mornington, walk the **Mornington Pier** precinct including the Snapper Point Look out. Visit the iconic **Mt Martha beach boxes**. Then take a Coastal esplanade coastal drive. Ride **The Eagle gondola** to the Arthurs Seat Summit. Lunch and wine tastings at a chosen winery. Taste complimentary chocolates at the Chocolatier. Return to the same Melbourne CBD hotel as pick-up.

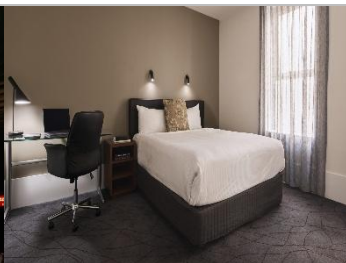


#### YARRA VALLEY WINERY TOUR WITH LUNCH (YVWT)

*(Operates: Tue & Fri Departs: 9.30am Returns: 5.30pm)*

The host will take you to the stunning winery locations. Indulge in tastings at all four wineries, enjoy a lovely scrumptious lunch with a glass of wine. Finish with a visit to the **Yarra Valley Chocolaterie** where you can sample complimentary chocolates. Return to the same Melbourne CBD hotel as pick-up.

## HOTEL DESCRIPTION (for guideline only)



#### THE VICTORIA HOTEL MELBOURNE - 3★

<https://www.victoriahotel.com.au/>

370 rooms – Hotel is 3 minutes' walk from the Bourke Street Mall and 5 minutes' walk from Chinatown Melbourne.



#### IBIS MELBOURNE CENTRAL- 4★

<https://all.accor.com/hotel/>

270 rooms – Located in the heart of Melbourne CBD (Central Business District). Its 9 minutes' walk from Federation Square and 11 minutes' walk from Bourke Street Mall.

All the picture shows in this flyer are for illustration purpose only

# TERMS & CONDITIONS

Passengers are deemed to have read, understood and accepted the following:-

## Package Price

Quoted in Australian Dollar (AUD) and payment in Ringgit Malaysia (RM), subject to currency fluctuation. Validity of prices is seasonal and subject to change without prior notice. Child rates are applicable when child are occupying a room with at least two adult.

## Deposit & Payment

A deposit of RM500 per person is required when booking is made. Receipt for deposit is valid for three (3) months from the date of issue. The deposit forms part of your final payment. Balance (final payment) must be made 15 days prior to departure. Failure to comply with this may result in an automatic cancellation of your reservations and forfeiture of your deposit.

## Accommodation

Bedding varies from hotel to hotel, but the following usually applies:-

Single Occupancy: comprises 1 Queen/1 Twin Bed

Double Occupancy: comprises 1 Queen/King Bed

Twin Occupancy: comprises 2 Single Beds

Triple Occupancy: comprises 3 Single / 1 Double +

Rollaway Bed

If a rollaway bed is required, an extra charge applies. Most hotels will not put more than one rollaway in a room. Baby cots can be requested in advance and if extra charge applies, passenger must pay directly to hotel.

**Gratuities:** AUD5 per person per day

**Hotel Check-In/Out Times :** Standard check-in time is after 1500hrs and check-out is before 1100hrs

## Amendment Charges

An administrative fee of RM100 will be charged for each subsequent amendment made after the confirmation. Any other cost arising from the amendment will be borne by the passenger. No amendment can be made within 15 days prior to departure. A change on the entire booking is considered a cancellation and is subject to cancellation charges.

## Cancellation Charges

You may cancel your booking at any time. Cancellation must be made in writing to avoid any misunderstanding. If your cancellation is received by the Company more than 30 days prior to your departure, an administration fee of RM100 per person will be levied. If your notice of cancellation is received fewer than 30 days prior to departure, the following cancellation charges will apply:

### Cancellation Received Cancellation Fee

Between 29 to 16 days prior to departure: Forfeiture of the Deposit

Between 15 to 11 days prior to departure: 50% of tour price

Between 10 days to departure day (No-Show): 100% of tour price

## Refund

No refund will be made for unused tickets or any other unutilized portion of the inclusions. Request for refund as a result of changes to the package must be made in writing and an administrative fee of RM100 per person applies in addition to the supplier's cancellation fee. Refunds are payable only through the original booking agent.

## General Information

The company reserves the right to substitute or alter similarly-priced accommodation, services and itineraries when necessary and there shall be no refund in such situation.

## Responsibility

The company acts only as an agent and does not manage, control or operate any suppliers of services. The Company assumes no liability for any loss, injury, damage, accident, delay or irregularity which may be caused by these events – Acts of God, natural disasters, civil & military disorders, industrial disputes and any cause beyond the reasonable control of any company or person engaged in carrying out the arrangements made.

## Reservations

All reservations are subject to space availability and confirmation.

## Customer's Responsibilities

- Travel Insurance – to cover medical expenses arising through illness or accident prior to or during the holiday, and loss of the holiday and loss of holiday monies, cancellation or curtailment of holiday for insurable reasons.
- Passport & Visas – to be in possession of a valid passport and whatever necessary immigration documentation may be required by the country(ies) for the duration of the holiday.

## Visa Application

Tourist visa is required for Malaysian passport